

BROCKWORTH PARISH

Welcome to the Brockworth Council pages of the magazine. We hope you have enjoyed reading these pages and receiving information about Brockworth village and events that are taking place in Brockworth.

Please send your stories, articles or information about Brockworth to the Clerk at Brockworth Parish Council so that we can include in the next edition of the magazine. The deadline for the next edition is 10th January 2012, and the magazines will be delivered at the start of February. For advertising requests, please contact the publishers of the magazine (details inside front cover page).

For parish council information, meeting dates, minutes of meetings, please see the Brockworth Parish Council website www.brockworth-pc.gov.uk

Brockworth Parish Council Offices are open Monday to Friday 9am to 2pm and are located in the Brockworth Community Centre on Court Road.

Telephone 01452 863123 or email clerk@brockworth-pc.gov.uk

the charity for
your community



The Citizens Advice Bureau provides an advice session on Tuesday afternoons 1.30 to 4.30pm at Brockworth Community Centre (appointments can be made with Community Centre reception). We apologise but due to funding restrictions, we are only able to help those from Brockworth.

Come and talk to advisors about Housing, Debt, Benefits, Employment, Discrimination, Family matters and much more. Please see www.adviceguide.org.uk for further advice and guidance.

THE FUTURE OF BROCKWORTH

Article by Borough Councillors J Perez, V Perez, M Rowcliffe-Quarry

The future of Brockworth is currently being decided, at Tewkesbury Borough Council, by the formation of the “Joint Core Strategy” document. The development of this document signifies the joining of resources of the three councils of Gloucester, Cheltenham and Tewkesbury. The document will lay out the plans for future housing, employment and development land for the next twenty years within the three areas as a whole.

Compared to previous similar documents, such as the “Local Plan” and the “Regional Spatial Strategy” which were based on future predictions of housing, employment, population and demographics, the Joint Core Strategy must be based on factual evidence.

Statistical data currently illustrates a great need of affordable housing particularly for Gloucester and Cheltenham; however the dilemma lies in the lack of available development land in Gloucester and Cheltenham. Tewkesbury in comparison has a great deal of land, particularly Green Belt and this land is currently being considered to cater for Gloucester and Cheltenham’s requirements. Many areas of Green Belt land are being evaluated for their effective contribution to areas. If deemed to be less effective than originally intended, the Green Belt designation can be and will be removed thereby allowing future development on that land.

Current indications are that Brockworth, considered an urban extension of Gloucester, should cater for Gloucester’s affordable housing requirements. With the introduction of the trunk road A417 cutting across the Shurdington and Churchdown boundaries, the effectiveness of the Green belt on the Brockworth side of the A417 is being questioned with possible deletion in sight. Possible housing numbers in this area are 1500. Should the Green Belt designation be removed on this land, the Planning Department would find it difficult to oppose further development, suggesting far larger housing numbers than 1500.

The Joint Core Strategy “Developing the Preferred Options” document will be available for public consultation from December 2011 to February 2012. It is imperative that the public at large has its say about the proposed changes to its area and in itself is further evidence that will be deployed by the Joint Core Strategy team in identifying the requirements and needs of these areas.

What are your views on the possible changes to Brockworth? Do you see a need for affordable housing for younger families, or perhaps more appropriate accommodation for our elderly population? Or do you think Brockworth has already received its fair share of housing. To express your views please email Jude Perez at councillor.perez@teWKesbury.gov.uk.

Make your views count in a major county-wide campaign to bring high speed broadband to rural Gloucester.

With government support, the borders broadband project is working to improve internet services in rural Gloucestershire. The process of finding a supplier is already underway- but first we have to prove there is enough demand from local people, communities and businesses.

To complete the survey online – or to find out more about the borders broadband campaign, visit the GFirst website www.gfirst.co.uk/broadband. Borders broadband is also conducting a separate online business survey, which is available at the same address. If you live in Gloucestershire and run a local business, you can complete both residential and business surveys.

If you are interested in volunteering as a broadband champion for your community, please contact Chris Cowcher a GRCC on 01452 528491.

HELP NEEDED FOR
GLOUCESTERSHIRE'S YOUNG HOMELESS

Local charity Gloucestershire's nightstop is recruiting hosts to take in people aged 16-25

Gloucestershire Nightspot is a charity that works directly with single young homeless people aged 16-25 across the county of Gloucestershire. Nightspot arranges temporary and emergency accommodation for young homeless people in the homes of trained and vetted individuals (or hosts): it is a community response to a community issue. We work closely with other organisations to ensure young people break free from the cycle of homelessness.

**BROCKWORTH
GOLDEN AGE CLUB**

**MONDAYS AT 2.00PM
MAKE NEW FRIENDS
ST GEORGES CHURCH HALL**

**GUEST SPEAKERS
QUIZZES
BINGO
DAYS OUT
FRIENDLY CHAT**

**ALL OVER 60 WELCOME
JUST TURN UP
OR CONTACT
MRS BARBARA LAW
01452 610857**

**Are you interested in
organising a regular car
boot/ market in
Brockworth?**

If so, please contact:

**Julie Shirley
Brockworth Parish
Council
01452 863123**

Horsbere Brook Project

The Horsbere Brook Project is a project that has been started by a small group of residents with support from many agencies working in partnership, including Severn Vale Housing who is providing the funding to help take this project forward. The purpose of the project is to clean up Horsbere Brook to make it a suitable area for people to take a walk and explore the wildlife.

There are a number of groups and organisations that are getting involved in the project:

- Brockworth Parish Council
- Severn Vale Housing
- Severn Trent Water
- Gloucestershire County Council
- Tewkesbury Borough Council
- British Trust Conservation Volunteers
- Environment Agency
- Brockworth Parish Council
- Police Community Safety Officers

The plan is to clear the brook of litter from A46 to Cedar Road. The rest of the activities are on the section from A46 to the Mill Lane playing field. We will be cutting back overgrown vegetation, reinstating pathways, steps, improving the bridges, putting in seating, fixing the water outflows, and put in a nature trail with information boards.

Volunteers will help by being involved in the planning and design of the improvements, and the continued upkeep of the area after all the big work has been done.

If you would like to get involved with the project please contact Julie Shirley on 01452 863123.

REGULAR ACTIVITIES AT BROCKWORTH COMMUNITY CENTRE

Monday

6.30pm to 8.30pm

Yoga for Pregnancy / Relax, Stretch & Breathe drop-in

7pm to 10pm

Youth Club (via Youth Centre)

Tuesday

9am to 12pm

Tewkesbury Borough Council Advice

1.30pm to 4.30pm

Citizens Advice Bureau

5pm to 7pm

Youth Club (via Youth Centre)

Wednesday

9am to 2pm (every 4 weeks)

Chiropody

11am to 12pm

Parent & Toddler Coffee Morning

2pm to 4pm (every 2 weeks)

Linda's Tea Dance

6pm to 7pm

Zumba

7pm to 9pm

Youth Club (via Youth Centre)

Thursday

9.30am to 12.30pm

Brockworth CC Art Class

12.45pm to 2.45pm

Rosemary Conley Diet & Fitness Club

2pm

Walking Club – walks are 30 to 60 mins

2pm to 5pm

Tewkesbury Borough Council Advice

3.45pm to 7.45pm

Slimming World

Friday

12pm to 2pm

Over-60s luncheon

3.30pm to 6.00pm

Street Dance

6.30pm to 9pm

Youth Club (via Youth Centre)

Saturday

10am to 11am

Fine Steps Dance Class

Sunday

10am

Kingfisher Church

COMMUNITY CENTRE COFFEE SHOP



The Coffee Shop is now open Monday to Friday 10am to 2pm for light lunches and refreshments (eat in or take-away). Just a few of the items we have available include: Hot drinks 50p per cup, take-away cold cans 60p, Home-made cake 50p per slice, Jacket Potato with filling £2.50

Call in and see Jane for a warm welcome

Contact details for the Parish Council

Mrs Julie Shirley (Parish Clerk)

Brockworth Community Centre, Court Road, Brockworth, GL3 4ET

Tel: 01452 863123 Email: clerk@brockworth-pc.gov.uk

Parish Councillors:

Maureen Rowcliffe-Quarry, 531223

Sonia Lefevre-Wellard, 863544

Carol Green, 863428

Fiona Miles, 864345

Ron Furolo, 864042

Carole Neal, 862257

Ibraheem Aruna, 611648

Iris German, 863207

Ben Evans, 07842 286104

Jude Perez, 863070

Frank Green, 863428

Tommy Lyons, 07597 490114

Vince Perez, 863070

Jim Hunt, 863705

John Clarke, 862767

Edward Buxton, 863548

Brockworth Albion Football Club
Match Results – August & September 2011

1st XI

27th Aug. Sharpness 0 – 1 Brockworth
3rd Sept. Brockworth 2 – 0 Dursley
17th Sept Brockworth 3 - 0 Stroud F.C.

2nd XI

1st Sept Brockworth 6 – 0 Gala Wilton
3rd Sept Tewkesbury 3 – 1 Brockworth
8th Sept Gala Wilton 2 – 2 Brockworth
10th Sept Northleach 2 – 3 Brockworth

3rd XI

20th Aug Coaley Rovers 3 – 4 Brockworth
27th Aug Brockworth 4 - 3 Wotton Rovers
3rd Sept Brockworth 4 – 0 Uley
10th Sept Brockworth 4 – 1 North Nibley
17th Sept Quedgeley 1 – 2 Brockworth
24th Sept Apperley & Tewks. 2 – 5 Brockworth

Under 9's

3rd Sept Brockworth 2 – 3 Hardwicke Rangers
17th Sept F.C. Higham 0 - 1 Brockworth

Under 8's

17th Sept Hucclecote 7 – 8 Brockworth.

Match report.

Hucclecote 7 Brockworth 8

Brockworth Under 8's enjoyed a great game with local rivals Hucclecote just shading the contest by a solitary goal. Star of the show was debutant Charlie Griffiths who scored 5 goals ranging from acrobatic half volleys to neat slide rule finishes. However credit must go to all of the lads who defended well at times (a bit wayward at others) and rallied well from 4-2 down with 20 minutes remaining.

Team:

1) Ryley O'Connor, 2) Jamie Nelmes, 3) Jack Badham, 4) Josh Nash,
5) Tyler Evans, 6) Dillon Evans, 7) Bradley Skinner, 8) Alex Bowden,
9) Charlie Griffiths

Well done lads, cracking start to the season.

New players and helpers are always welcome. For information please contact one of the following:

Name:	Telephone No:	E-mail address:
Nick Delves	01452 531614	nick.delves@blueyonder.co.uk
Andy Price	01452 552613	aps_andyprice@hotmail.com
Garry Norris	01452 551789	gnorris@glos.ac.uk
Dave Kenward	01452 712481	divaddrwnek@btinternet.com



THURSDAY WALKS FOR HEALTH

We meet at 2pm on Thursdays at the Brockworth Community Centre, Court Road, Brockworth. The duration of the walk is normally 30 minutes to 60 minutes and followed by tea / coffee from the café. Do come along and join us – all are welcome.

There is normally a longer walk on the 1st Saturday in the month. We meet at Brockworth Library. For further details please contact Fiona Miles 01452 864345 or Ken Duke 01452 610281.



**BROCKWORTH PARISH COUNCIL
COMMUNITY BUS SERVICE
Operated by Minibus Direct**

PLEASE NOTE THIS IS A 'FLAG-DOWN' SERVICE

1. Tesco Supermarket	10.00	11.30
2. Kennel Lane	10.06	11.36
3. Doctors Surgery	10.08	11.38
4. Riversmeet House	10.13	11.43
5. Community Centre	10.16	11.46
6. Ermin Park Shops	10.21	11.51
7. Sports Centre	10.25	11.55
8. Wyevale Garden Centre	10.30	12.00
1. Tesco Supermarket	10.35	12.05 by request



Christmas Refuse Collections

Please note that the Refuse Recycling service will be collecting on **Tuesday 27th December** and **Tuesday 3rd January 2012** instead of the normal Monday service.



Brockworth Children's Centre

Brockworth Children's Centre are now on "FACEBOOK" for all the latest information about opening hours, groups, activities and trips add us a friend (we can only accept friends that are registered with the centre).

For those of you, who don't know where we are, "We are located within the grounds of the Brockworth Primary School on Moorfield Road". The centre has a reputation as a place of opportunity, education and fun for children and adults alike.

The main sessions available on a weekly basis include; Monday- Stay and Play 1:00-3:00pm Tuesday- Baby Clinic /Health Visitor Drop In (1:30-3:00pm) Wednesday- Polish Group (9:30-11:30am) ,Friday- Bumps, Babies and Beyond (from bumps to 1 years old) (9:00-11:30am) - drop in and see the midwife for your antenatal check, meet other parents with babies. Breastfeeding Peer Supporter available.

We also hold a Family Time session at Coopers Edge Temporary Community Centre on Tuesday's 1:00-3:00pm.

The centre staff can also offer help and support on more specific services available to access such as Ante Natal Classes, Positive Change (Parenting Course), Counselling, Baby Massage, Smoking Cessation, Teenage Pregnancy, whilst promoting emotional health and wellbeing on a one to one basis if required.

Christmas - Join us for Christmas Celebrations with an entertainer on Monday 12th December at Stay and Play.

The Centre will be closed week commencing 26th December and will re-open Wednesday 4th January 2012.

If you would like any further information about any of our groups/sessions or to register so that you can be our friend on "FACEBOOK" please call in for a chat and a cuppa or alternatively please contact us on 01452 863617 or via email on Brockworthcc@gloucestershire.gov.uk and we can send out timetables and leaflets of the services and groups available.



Brockworth Primary School

Christmas Fete

Fri 9th December

3 till 5 p.m. (straight after school)

Looking forward to seeing you all then!



Brockworth PTFA held a successful and enjoyable disco in October which raised £196. We are now planning ahead for fundraiser events for the rest of the school year. We would be delighted for families and members of the local community to join us and/or help with these events.

For your Diary - Dates and Events planned:

Friday 9th December 2011, 3pm - 6pm - Christmas Fayre.

Donations of items (e.g. chocolate, bottles for the tombola) & time (before, during & after the Fayre) will be needed for this popular event!

2012 events:

Friday 27th January - Psychic Evening

Friday 2nd March - School disco

Saturday 21st April, 10am - 1pm - Car boot sale

Friday 18th May, 6pm-8pm - Quiz night

Saturday 26th May, 10am-1pm - Car boot sale

Friday 15th June - School disco

Saturday 30th June, 10am-1pm - Car boot sale

All these events will be advertised closer to the dates and tickets for Psychic and Quiz nights will be available.

If you are able to help with any of these events please contact the chair, Yvonne Walker on brockworthptfa@yahoo.co.uk or see any other committee member at the school: Thanks and see you there!

Kerry Harris - Treasurer

Helen Kibble

Veronica Steele

Carol Webb - Secretary

Marie Kibble

Michelle Harris

What has the Parish Council done for you since May 2011?

Brockworth Parish Council, with its staff, have considered 39 planning applications; dealt with 54 reports of fly tipping / potholes / broken street lights / overgrown hedges; arranged 13 burials; cooked 587 meals for the over-60s Friday lunch club; organised 520 meetings and conferences; attended 16 parish council meetings; organised the annual summer fete; gave donations to 11 community groups; gave out over 1,000 packs of doggie waste bags; repainted 7 parish benches; finished the Parish Plan document; started co-ordinating the Horsbere Brook Project; commenced consultations with young people about the play area refurbishment project; supported Brockworth Community Project to continue youth provision; and all sorts of other things!

To keep in touch with the Parish Council, follow us on Twitter (BrockworthPC) or look at our website www.brockworth-pc.gov.uk. We're also available to visit at the Community Centre on Court Road Monday to Friday 9am to 2pm.



From 1st January 2012, dog waste bags will be available from Brockworth Community Centre at **50p** per pack (maximum 2 packs per customer each week). The charge has been introduced to cover the costs of the bags, however at 50p per pack they remain cheaper than buying from the local supermarket 😊

Castle Hill Primary School - Autumn Term

As I write this, our team of lovely parents are wrapping the last of the shoeboxes. These are filled with all sorts of goodies before being wrapped in Christmas paper. They will be taken to Romania where we know they will make some families very happy. The children particularly enjoy supporting this charity because it helps them understand that there are less fortunate people than themselves. It is also something that they can actively participate in to feel that they can make a difference.

In fact, helping other people has been a strong theme this term. In celebration of Harvest, we were able to share lots of tinned produce with local people through the work of Gloucester Food Bank. Both children and parents shared an insight into their work at our special Harvest Assembly. We all agreed that this is a charity that carries out very valuable work for deserving people in our area, not just at Harvest, but throughout the year.

On Friday 11th November, the school will be supporting the British Legion by buying poppies. The children will also be invited to dress in red for the day (for a fine) that will contribute to the 'Help for Heroes' charity. At our school, we know it is important to share with the children, all the efforts and sacrifices that other people make on their behalf.

After that, our School Council will be leading us through their ideas for 'Children in Need'.....

At Castle Hill, we try to help everyone! It makes us understand the value of cooperative working and how if we share our strengths we can overcome our own weaknesses. In the classroom we work together to maximise learning. Outside the classroom we want to value our immediate community as well as the wider world that we live in.

How happy are British Children ?

The following article has been slightly adapted from an article on the UNICEF UK website.

New research* for UNICEF UK has shown that children in the UK feel trapped in a "materialistic culture" and don't spend enough time with their families. The research gives an in-depth comparison of children's experiences in the UK, Sweden and Spain.

Children aged from 8 to 12 in all three countries told researchers that their happiness is dependent on having time with a stable family and plenty of things to do, especially outdoors, rather than on owning technology or branded clothes. Despite this, one of the most striking findings is that parents in the UK said they felt tremendous pressure from society to buy goods for their children; this pressure was felt most acutely in low-income homes.

The research also shows that although parents in the UK are committed to their children, they lose out on time together as a family due in part to long working hours. They often try to make up for this by buying their children gadgets and clothes. Such consumer culture in the UK contrasts starkly with Sweden and Spain, where family time is prioritised, children and families are under less pressure to own material goods and children have greater access to activities out of the home.

In response to the research, UNICEF UK is calling on the UK Government to:

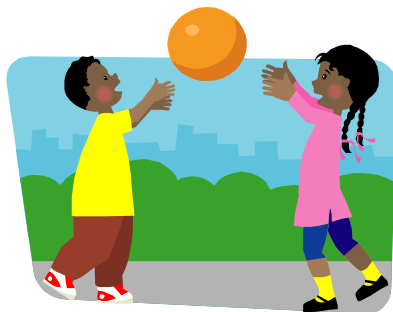
- encourage businesses to pay a living wage, so parents don't have to take on several jobs to make a living, which affects the amount of time they can spend with their children
- insist local authorities assess the impact of public spending cuts on children so that funding is protected for play facilities and free leisure activities
- follow Sweden's example and stop TV advertisements being shown before, during or after programmes aimed at under-12s.

"Right now politicians are grappling with the aftermath of the riots and what they say about our society, culture and families," said David Bull from UNICEF. "The research findings provide important insights, and it is vital that those in power listen to what children and their families are saying about life in the UK."

As one commentator says, "Ultimately, all parents have to make spending time with their children their top priority, even if it means making some fairly drastic lifestyle changes. Material goods should not dictate how we live our lives – whether it's working all hours to afford them or offering them as an 'apology' for working all hours. Children aren't able to see the bigger picture – they may well think a new iPod is the path to true happiness – but it is the job of parents to know what really is best, and we can't risk losing sight of this". (<http://carycooperblog.com/2011/09/14/family-values/>)

- To read the Child Wellbeing Report, go to <http://www.unicef.org.uk/>.
- In 2007 another report ranked the UK bottom in child well-being compared to other industrialised nations.

*(Research by Ipsos MORI that came out in Sept 2011.)



TERMTIME ACTIVITES FOR KIDS



BROCKWORTH ALBION FOOTBALL CLUB

Training has begun – we still need more kids, especially the younger ages. Would your son or daughter like to join us?

- fun, focused football training
- for all ages - Year 1 and up, in age groups
- girls & boys both welcome
- regular friendly matches with other clubs

When? Saturdays 10 a.m. (You can just turn up and ask for Gary)

Where? Brockworth Enterprise School pitch, Mill Lane, GL3 4QF

Who can I contact? Gary (School coordinator) 01452 551 789

How much does it cost? £ 1 a week

Kids verdict: It's fun!

Training continues until the school Christmas break and restarts in January.



29th GLOUCESTER SCOUTS GROUP

*We have welcomed a lot of new members recently, which is great.
Still recruiting all ages, especially Explorers (teenagers).*

- exciting indoor and outdoor activities for boys and girls aged 6-18
- different activities & days according to age groups

When?	Beavers	age 6-8	Monday 6.30 – 7.45 p.m.
	Cubs	age 8-10 ½	Wednesday 7 – 8.30 p.m.
	Scouts	age 10 ½ -14	Tuesday 7 – 9 p.m.
	Explorers	age 14-18	Thursday 7 – 9 p.m. (alternating venue)

Where? The Scout Hut, Clyde Road, GL3 4JN

Who can I contact?

Beavers	Alison Bates	01452 - 551 757
Cubs	Wendy Mason	01452 - 713 651
Scouts	Simon Jeffries	01452 - 415 857
Explorers	Derek Knight	01452 - 521 251
overall group contact	Wendy Mason	01452 - 713 651

How much does it cost? £ 8 per month, term time

As an example - Cubs' Activities in November & December 2011 include: weekly meetings; Scientist Badge; Remembrance Day Parade; Astronomer Badge day at @Bristol; District Chess Congress. Wow!



As the year draws to a close, the Jet Age Museum looks back on a successful year of fundraising and ahead to an exciting 2012. The final legal formalities are being completed for the lease at Gloucestershire Airport, Staverton and, with the museum's funds now standing at just over £250 000, the building project should be able to begin in the New Year. A further £20 000 will be required to complete the project but the committee is confident that commencing the project will stimulate further donations.

Throughout the year, preservation work has continued on the collection's aeroplanes. The Gloster Meteor Mk.8 has been relocated to the Flying Shack where the volunteers have worked to repair damaged and missing panels. The Avro Vulcan cockpit has had a repaint and some internal repairs and now proudly guards the gate at the Airport's microlight training school. At the Brockworth workshop, the spectacular Gloster Gamecock is very nearly complete after almost 20 years of work. The starboard side of the 1930's biplane has been left uncovered to show the craftsmanship that has gone into the project. The workshop at the Tithe Barn Centre is open most Saturdays between 1pm and 4pm.

The museum's final fundraising event of the year will be held at the Flying Shack, Gloucestershire Airport on Saturday 10th December from 11am to 4pm, celebrating the 60th anniversary of the Gloster Javelin's first flight. The delta winged fighter, the last aircraft to be built at Brockworth, took to the skies for the first time on 26th November 1951. The museum's example will be on display and visitors will be able to tour the Vulcan cockpit and purchase museum merchandise. Weather permitting, pleasure flights and trial flying lessons will also be available.

The museum is an all-volunteer, charitable organisation dedicated to the preservation of Gloucestershire's aviation heritage. Membership costs £10 per year. Full details of the museum's activities can be found on the website www.jetagemuseum.org or by following Jet Age Museum on Facebook.